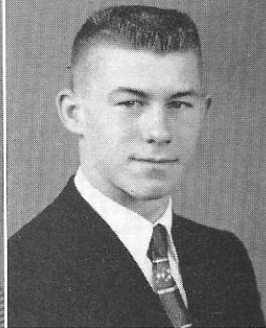
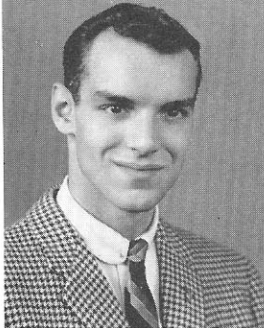


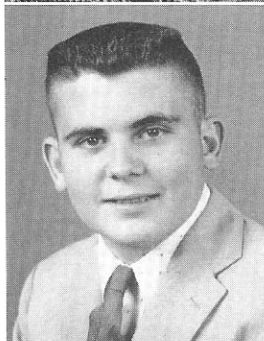
EDWARD GEISER, General — St. Mary's High School, Lancaster, Ohio 3.

BOB GRAHAM, Commercial—Gym Leaders 3; Basketball 1,2,4; Baseball 2,3.



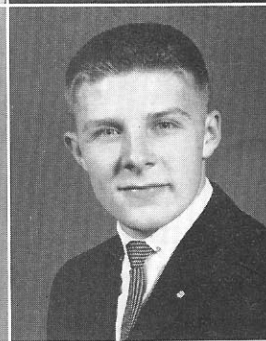
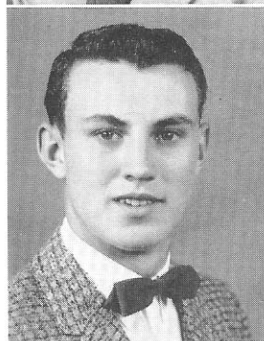
DONALD WILLIAM GEORGE, Commercial—Stage Crew 2,3; Moving Picture Service 2,3,4.

RUTH GRAVES, Commercial—Future Teachers 4; 9th and 10th yr. Chorus 1; Office Staff 4; Secretarial Club 4.



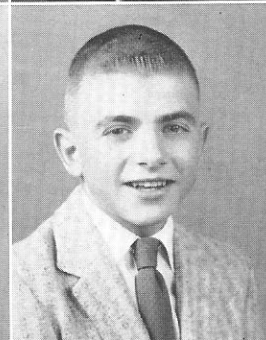
SIDNEY GEORGE, Industrial Arts.

ROGER GRAYBILL, College Preparatory—Student Council 1; Latin Club 2,3,4; Science Club 2; Band 1,2,3; Orchestra 3; Hi-Y 3,4.



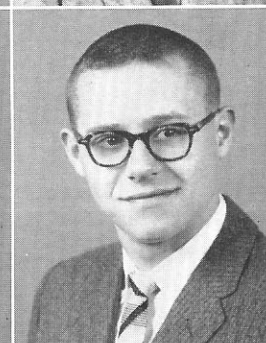
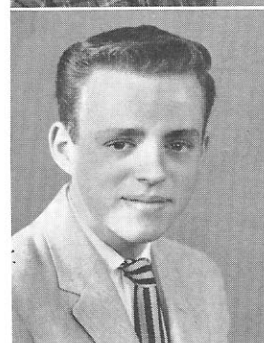
ANNE GILMORE, College Preparatory—Student Council 1,3; Honor Society 3,4; Latin Club 2,3,4; Big Sisters 3,4; Band 1,2; Future Teachers 3,4; Usherettes 2,3,4.

GARY GRIFFIN, College Preparatory—F.F.A. 1,2,3.



TOMMY GOSSEL, College Preparatory—Choir 1,2.

LEE GROVE, Commercial.



BILL GRAF, Commercial—F.F.A. 1,2,3; Baseball 2; Hi-Y 3,4.

SUNSAN GROVE, Commercial—Y-Teen 1,2; Library Club 4.

