

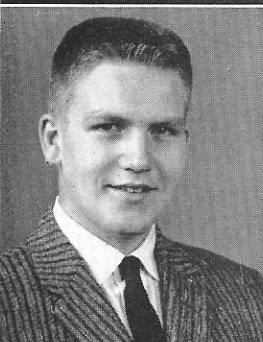
**TOM GUISENGER**, Trades and Industries—T & I 3,4; Key Club 2,3.

**RUTH HARWARD**, Withdrawn.



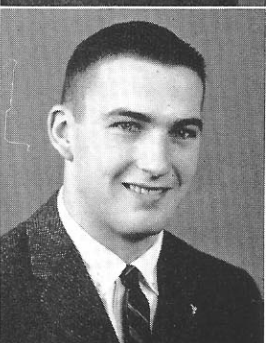
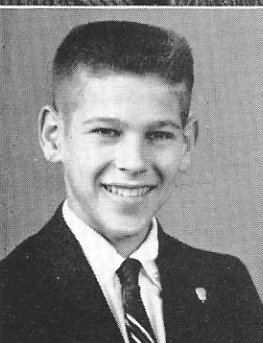
**JUDY HAKE**, College Preparatory—Latin Club 2; Y-Teen 1,2,3,4; G.A.C., 2,3,4; Gym Leaders 4; Intramurals 1,2,3,4; English Club 2,3.

**DONNA JEAN HAWK**, Commercial—F.H.A. 1,2,3,4; Choir 1,2,3,4; 9th and 10th yr. Chorus 1,2.



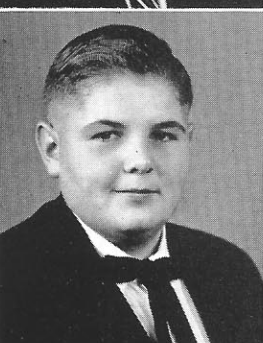
**ALAN HALE**, College Preparatory—Football 1,2; Hi-Y 3,4.

**LINDA HAYNES**, Commercial—Y-Teen 3,4; F.F.A. 2,3,4; G.A.C. 4; Choir 1,2,3,4; 9th and 10th yr. Chorus 1; Intramurals 1,2,3,4.



**TOM HAMMER**, College Preparatory — Student Council 1; Honor Society 3,4; Latin Club 2; Big Brothers 2,3,4; Varsity L 3; Football 1,2,3; Basketball 1; Baseball 2,3; Hi-Y 3,4; Engineers 3,4; Key Club 2,3,4; Class Play 3,4.

**PHIL HAZELTON**, College Preparatory—Student Council 2,3,4; Gym Leaders 3; Varsity L 3,4; 9th and 10th yr. Chorus 1; Football 1,2,3,4; Basketball 1,2,3; Track 1,2,3,4; Hi-Y 3,4; Key Club 4; Class Play 3,4.



**JOHN E. HANNA**, Trades and Industries—T & I 3,4.

**BILL HAZLETT**, College Preparatory—Band 1,2,3; Future Teachers 3; Orchestra 2,3; Hi-Y 3; Engineers 3.



**SHIRLEY HARMON**, College Preparatory—M. H. High School, Chicago, Illinois 1,2,3.

**NANCY HEDGES**, College Preparatory—Honor Society 4; Los Caballeros 2,3,4; Y-Teen 2,3,4; G.A.C. 2,3,4; Future Teachers 3,4; Intramurals 1,2,3,4.