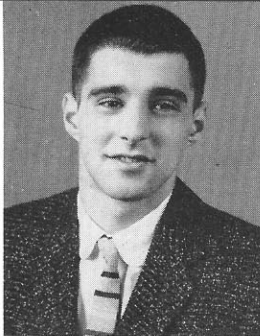


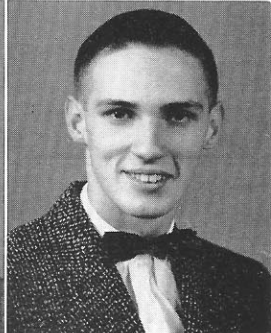
BOB VAN LINGE, College Preparatory.

FLORA WAUGH, Commercial—F.H.A. 4; Intramurals 1.



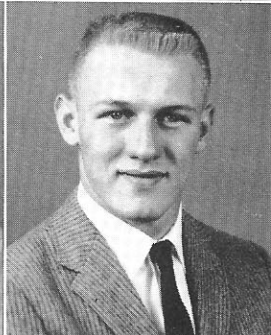
ARBUTUS VAN SCOY, Commercial—Intramurals 1.

DAVE WEAVER, Industrial Arts—Basketball 1.



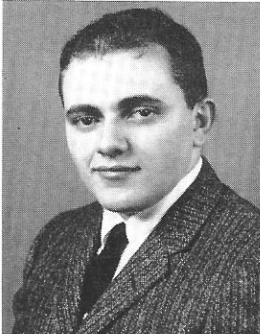
LUCY VENTRESCA, Commercial — F.H.A. 1,2,3; Secretarial Club 4.

GEORGE WILLIAM WEAVER, College Preparatory Student Council 4; F.F.A. 1,2,3,4; Varsity L 3,4; Football 1,2,3,4.



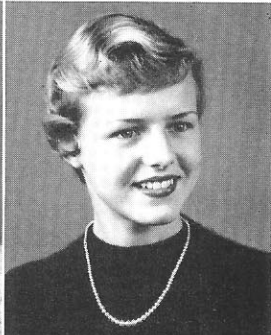
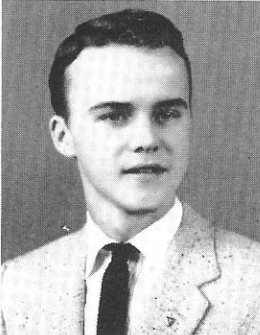
PAT A. VENTRESCA, Trades and Industries—Stage Crew 2; T & I 3,4.

PEGGY WEAVER, Commercial—Intramurals 1,2; Secretarial Club 4.



BRIAN WARD, College Preparatory—Student Council 3,4; Big Brothers 3,4; Moving Picture Service 4; Football 1; Track 3,4; Hi-Y 3,4.

BARBARA WEIDNER, College Preparatory—Student Council 1; Latin Club 4; Los Caballeros 2,3; Big Sisters, 3,4; Y-Teen 1,2,3; G.A.C. 2,3,4; Future Nurses 2,3,4; Purple and Gold Staff 4; 9th and 10th yr. Chorus 1; Intramurals 1,2,3,4.



MELVIN WATROUS, College Preparatory—Future Teachers 3,4; Stage Crew 3,4; Moving Picture Service 3,4; Columbus Starling, Columbus, Ohio 1.

MARY ANN WELCH, College Preparatory.

